

A

B

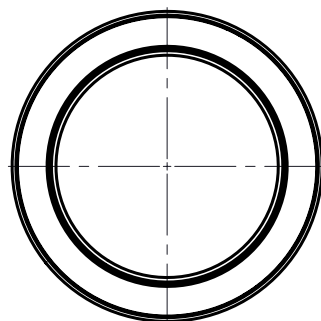
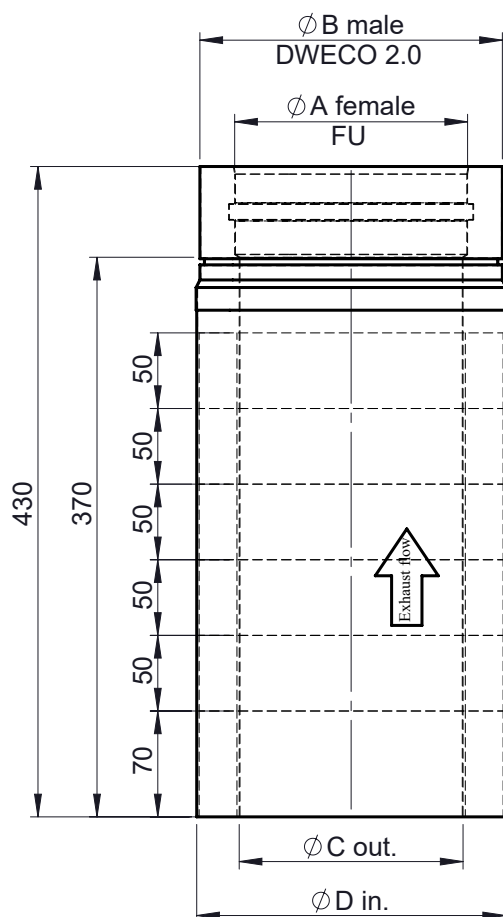
C

D

E

F

Possible type of female part "FU"

1:8 (150)
Incl. System clamp

Ø	080	100	110	120	130	150	160	180	200	225	250	300	350	400
A	80	100	110	120	130	150	160	180	200	225	250	300	350	400
B	130	150	160	170	180	200	210	230	250	275	300	350	400	450
C	77	97	107	117	127	148	157	177	197	222	247	297	347	397
D	133	153	163	173	183	203	213	233	253	278	303	353	403	453
kg	1,6	1,9	2,2	2,2	2,4	2,7	2,9	3,2	3,5	3,9	4,3	5,0	5,8	6,6

notes:
ENCD

DIN ISO 13920 Tolerances B

revisions-no.

A

mm / kg

date

name

drawn by

31.10.19

MSA

checked by

31.10.19

SWA

approved by

31.10.19

JWY

modified by

CHIMNEY SYSTEMS

description Adjustable pipe element 430 mm

code 215-DWECO 1160 Ø

drawing-no. 01-02-35-4284-215

scale

1:8

format

A4

sheet

1 of 1

