

A

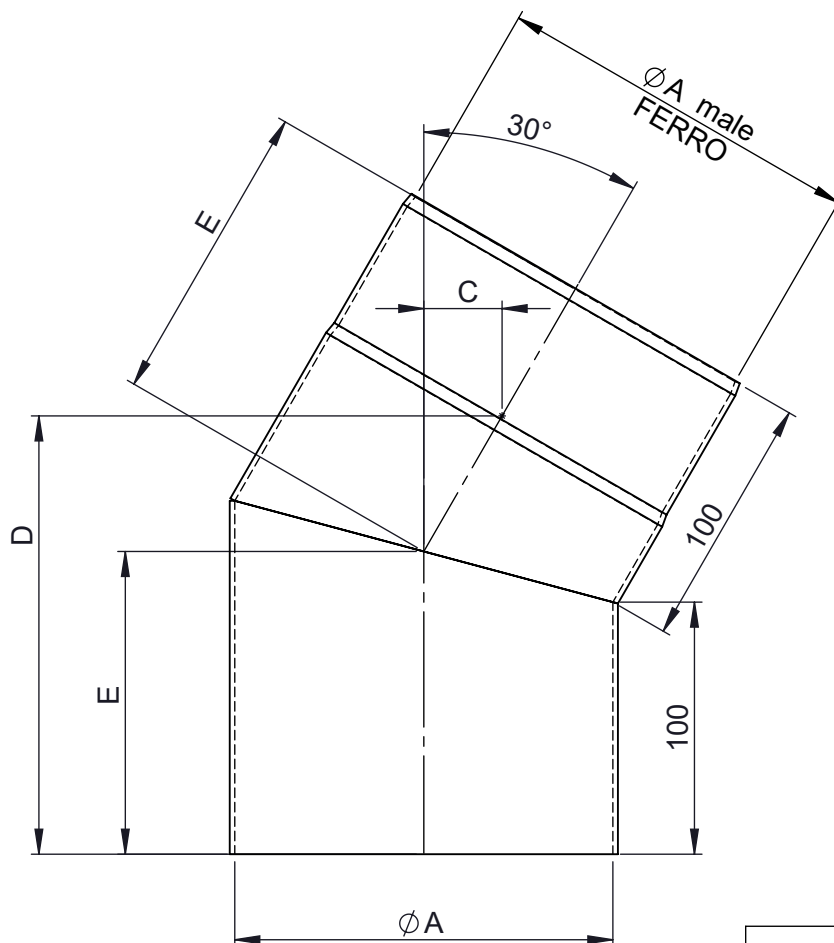
B

C

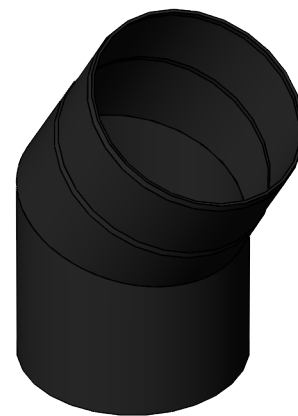
D

E

F



1:5 (150)



Attention [Uwaga]
Ferro x...

- 0 - not painted [element niemalowany]
- 1 - SENOTHERM 702.284 black [czarny]
- 2 - SENOTHERM 702.310 black-metalic [czarny metalik]
- 3 - SENOTHERM 702.288 gray [szary]
- 4 - SENOTHERM 800.820 light-gray [jasno szary]

Ø	115	120	125	130	150	160	180	200	250
A	115	120	125	130	150	160	180	200	250
C	28	29	29	29	31	31	33	34	37
D	165	166	168	169	174	176	181	186	199
E	115	116	117	117	120	121	124	127	133
kg	1,3	1,4	1,5	1,5	1,8	1,9	2,2	2,5	3,3

notes:

ENCD

DIN ISO 13920 Tolerances B

revisions-no.

A

mm / kg

date

name

drawn by

02.01.20

JMA

checked by

02.01.20

SWA

approved by

02.01.20

JWY

modified by

Jeremias[®]
CHIMNEY SYSTEMS

description Elbow 30°

code FERRO x411

drawing-no. 01-06-01-6050-000

scale

1:3

format

A4

sheet

1 of 1

