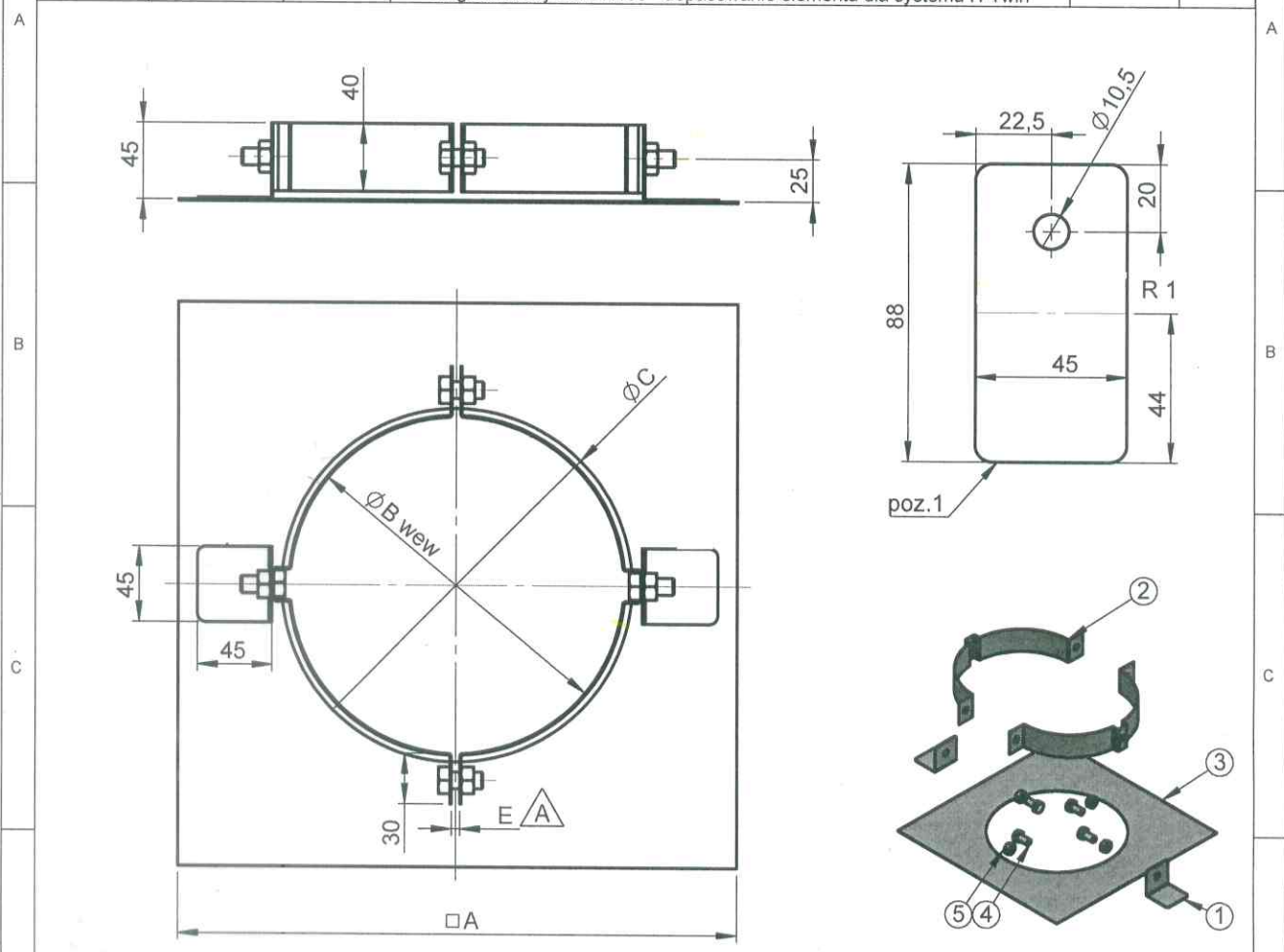


1	2	3	4
---	---	---	---

TABLE OF CORRECTIONS (LAST FIVE)

REVISION	CORRECTION	WZT NO	DESCRIPTION	DATE	NAME
01	A	62/2017	skrócenie rozwinięcia obejmy dla DN100, po 5mm na każdej z obejm, zmiana długości śruby dla DN100 - dopasowanie elementu dla systemu H-Twin	14.07.17	PSA



NO	NAME / GEO / DIN / NAV	MATERIAL	THICKNESS	QTY
5	Nakrętka sześciokątna (DIN 934)	A2	M10	4
4	Śruba o łbie sześciokątnym rodzaj C (DIN 933)	A2	M10 X D/A	4
3	plyta	1.4301 III C	t2	1
2	obejma	1.4301 III D	t1	1
1	wspornik	1.4301 III C	1,0	2

A																				
Ø	080	100	115	120	130	140	150	160	180	200	225	250	300	350	400	450	500	550	600	
A	265	285	300	305	315	325	335	345	365	385	410	435	485	535	585	635	685	735	785	
B	130	150	165	170	180	190	200	210	230	250	275	300	350	400	450	500	550	600	650	
C	140	160	175	180	190	200	210	220	240	260	285	310	360	410	460	510	560	610	660	
D	20	30	20																	
E	5	10	5																	
t1	1,0										1,5									
t2	1,0										1,5									

	Material inside/outside		/		Description		Płyta fundamentowa dla wsporników pośrednich		Weight		
	Date		2015-06-27		Name		MFL		Format		
	drawn by		2015-06-27		checked by		PSA		A4		
	checked by				Production code		DWECO-SDH typ2		Sheet		
	checked by				Project				1 of 1		
All dimensions without tolerances are produced according to Jeremias internal tolerances		approved by		2015-06-27		JWY		Drawing no.		215 - 1315 - 01 - 2P	
All rights reserved								Revision		Type	

© Jeremias GmbH. All rights reserved, also regarding any disposal, exploitation, editing, distribution, as well as in the event of applications for industrial property rights.